



Oppland 3 LW

Tips & Tricks

Congratulations!

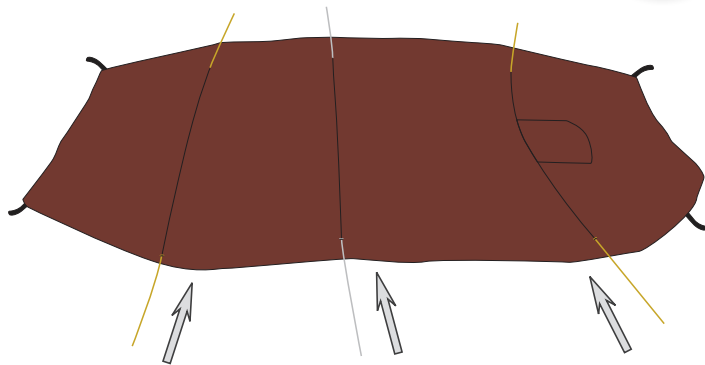
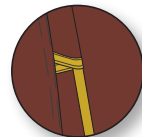
We wish you lots of fun with your new Nordisk tent!



Spread out the tent. Thread the poles through the color coded pole sleeves. Ensure all doors are closed.



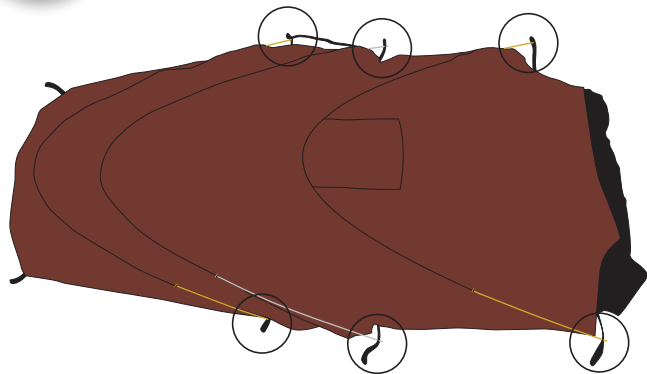
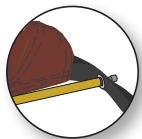
Ensure an even surface without any sharp objects!



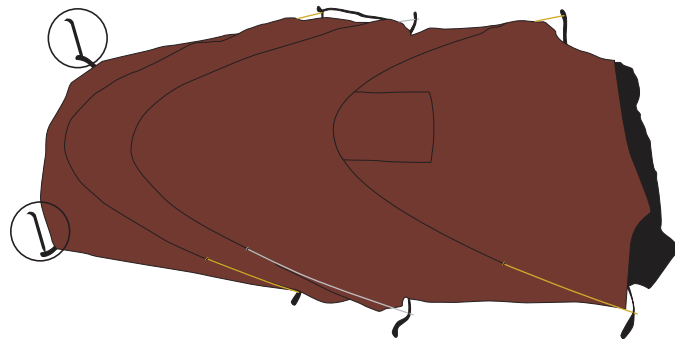
NORDISK™

E

Fix the pole ends into the webbing eyelets on the outer tent.

**F**

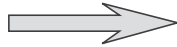
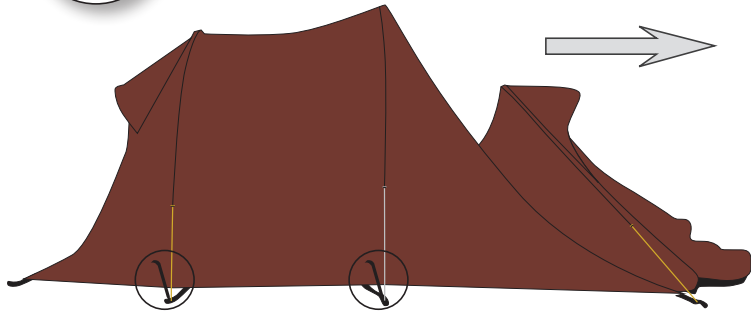
Secure the tent to the ground by attaching pegs onto the webbing loops only at one end of the tent, starting with the end facing the wind.



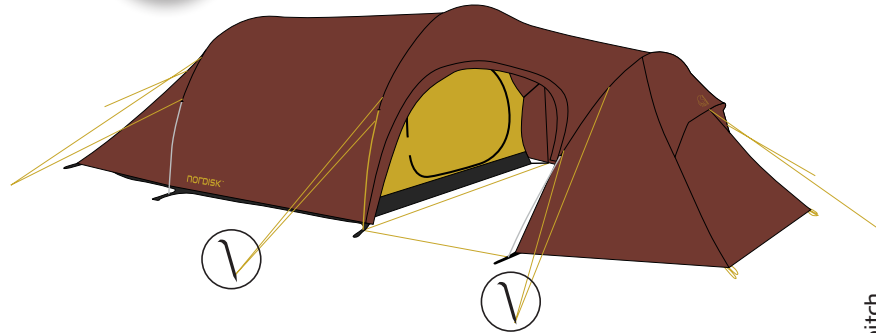
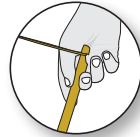
NORDISK™

4

Pull the webbing loops in the end towards you and walk backwards to erect the tent. Mount the remaining pegs to the ground.

**5**

Secure the tent by attaching the guy ropes to the ground. Depending on weather conditions judge how many gus ropes that are needed. In stormy weather the tent must be securely anchored. Adjust webbings and guy ropes for correct tension.

**NORDISK™**

Trek·Camp·Live

– take care of your Nordisk tent!

Before Trek

- build up the tent from home and **check if everything is ok.**
- **know the environment** you'll go to (sand, hard soil, snow), and check that pegs etc. matches this
- consider to bring along a **footprint**
- **check that the poles are ok**, and if not; buy a new set before you go
- **bring along a repair kit** incl. an outer tube for poles and tape for broken seams etc.
- make sure the **tent is clean**
- ensure that **zippers runs smoothly** (if not, get some silicone spray)
- if trekking in very wet conditions, **seal the seams** with a seam sealer, but check if it is SI or PU
- do not overfill your packsack as you might need the **extra space** during the trip
- **optimize weight** by leaving pegs, inner cabin etc. at home if it's not needed on the trip
- **compress the packsack** as much as possible

In the Camp

- make sure you **pitch on an even surface**. Some models depends on this for optimal ventilation
- **do not camp in too high grass** if you want floor level ventilation
- **remove sharp rocks and sticks** that could harm the tent floor (i.e. use footprint)
- **stretch the tent as much as possible** for optimal strength and water repellency
- if wet or very windy, you need to **re-adjust the tension of the guy ropes**
- if very windy, **use extra guy ropes and pegs** for stability
- **put the packsack somewhere where you can find it** again (i.e. mesh pockets inside the tent)
- **avoid fire and smoke** near the tent – be aware of wind directions!
- keep an eye on **guy rope tension** once in a while
- the pack sack is a little bigger than necessary in case of an emergency pack down
- **remove all traces from your camp**

Living with your tent

- **keep it clean** by hosing it after use, if very dirty. But don't use high pressure
- **clean it with a soft sponge**
- use **no harsh chemical cleaning** or machine washing
- **keep it dry**, and if packed down wet, remember to dry it as soon as possible
– remember that a wet tent is heavier than a dry one
- **check guy ropes and pegs** once in a while, and buy new ones if damaged
- if you have **damaged poles**, your local Nordisk dealer can supply new ones
- be aware that long **exposure of sunlight can degrade the fabric**
- if you want floor in your apts, you can **purchase a tailored footprint**
- love and nurse your tent. **If you protect your tent, it will protect you**

You can find more information on nordisk.eu



Scan it!

For 360° View, Windtest,
How to pitch & Fact sheet



NORDISK™

Tips & Tricks

- 1 When you open a door, you can fold and store it, in the mesh pockets found near the door.
- 2 You can adjust the height and the ventilation, just by pulling the webbings found near the poles.
- 3 You do not have to use the inner cabin in the tent – it can be pitched just as a shelter.
- 4 On Oppland 3 you can open the side door and attach a tarp as an exit/entry extension.
– please see our tarp collection at nordisk.eu
- 5 The pack sack is made a little bigger than necessary in case of an emergency pack down
– you can adjust the pack size with the tension buckles.



www.nordisk.eu

Nordisk Company

Papirfabrikken 74
DK-8600 Silkeborg
Tel. +45 7373 4000
Fax +45 7373 8015
info@nordisk.eu

Denmark, International

Nordisk Freizeit

Max-Weber-Strasse 16
D-25451 Quickborn
Tel. +49 (0) 4106 76770
Fax +49 (0) 4106 767714
info@nordisk.de

Germany, Austria, Switzerland

Nordisk Asia

Unit 904, Zhong Rong Heng Rui
West Tower
560 Zhang Yang Road
CN-200122 Shanghai
Tel. +86 13901625206
jpo@nordisk.eu
China, Taiwan, Hongkong